

## OCCASIONAL NOTES.

## I. DESCRIPTION OF A NEW CICADA.

Recently, while collecting in the Dorrigo, Mr. R. J. Tillyard, M.A., succeeded in capturing what proves to be a new Cicada. This was submitted to Mr. Howard Ashton, who now describes and figures it. R.E.

*Division* CICADATRARIA.*Sub-family* GEANINÆ.*Genus* Tamasa, *Distant*.TAMASA RAINBOWI, *sp. nov.*

(Fig. 41).

Similar in general appearance to *T. tristigma*, Germ., from which it differs in the broader and more spotted tegmina.

*Body*.—Olivaceous green.

*Head*.—The head with lateral borders of front, region of ocelli, and a line along margins of eyes, black.

*Pronotum*.—With double centre fascia, sub-obsolete except with posterior portions, which are united, and incisions (faintly) blackish.

*Mesonotum*.—With two obconical spots margined with black, a double central longitudinal fascia, and four spots before anterior angles and cruciform elevation black.

*Abdomen*.—With piceous markings on anterior borders of first and second segments, a blotch of same colour on lateral area of second segment, behind a patch of silvery tomentum on first segment, a series of lateral spots on third, fourth, fifth and sixth segments, and the whole of last segment piceous.

*Body*.—Beneath green, two longitudinal fasciæ to front, central fascia to clypeus, tip of rostrum, streaks to coxæ and fore-femora, margins and abdominal segments and anal segment piceous.

106B

## DESCRIPTION OF A NEW CICADA.

*Tegmina* and *Wings*.—Hyaline, venation fuscous, darker towards apices. Tegmina with anastomoses and apices of longitudinal veins to apical areas all infuscated.

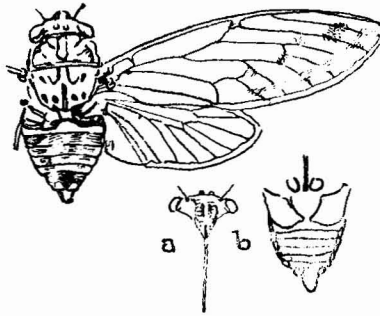


Fig. 41. *T. rainbowi*, Ashton.

*Measurements*.—Length of body, ♂, 24 mm.; ♀, 23 mm.; expanse of tegmina, ♂ and ♀, 81 mm.

*Hab.*—Dorrigo. Two specimens, ♂ and ♀ in Australian Museum.

HOWARD ASHTON.